



Woodworking machinery at its best!

**BELT & DISC SANDER
OWNERS MANUAL
MODEL: BD15**



**Charnwood Machinery Ltd, Cedar Court, Walker Road,
Bardon Hill, Leicestershire, LE67 1TU
Tel. 01530 516 926 Fax. 01530 516 929
email: sales@charnwood.net website: www.charnwood.net**

GENERAL SAFETY RULES



WARNING: Do not attempt to operate the machine until you have read thoroughly and understood completely all instructions, rules, etc. contained in this manual. Failure to comply may result in accidents involving fire, electric shock, or serious personal injury. Keep this owner's manual and review frequently for continuous safe operation.

1. Know your machine. For your own safety, read the owner's manual carefully. Learn its application and limitations, as well as specific potential hazards pertinent to this machine.
2. Make sure all tools are properly earthed.
3. Keep guards in place and in working order. If a guard must be removed for maintenance or cleaning, make sure it is properly replaced before using the machine again.
4. Remove adjusting keys and spanners. Form a habit of checking to see that the keys and adjusting spanners are removed from the machine before switched it on.
5. Keep your work area clean. Cluttered areas and workbenches increase the chance of an accident.
6. Do not use in dangerous environments. Do not use power tools in damp or wet locations, or expose them to rain. Keep work areas well illuminated.
7. Keep children away. All visitors should be kept a safe distance
8. from the work area.
9. Make workshop childproof. Use padlocks, master switches and remove starter keys.
10. Do not force the machine. It will do the job better and be safer at the rate for which it is designed.
11. Use the right tools. Do not force the machine or attachments to do a job for which they are not designed. Contact the manufacturer or distributor if there is any question about the machine's suitability for a particular task.
12. Wear proper apparel. Avoid loose clothing, gloves, ties, rings, bracelets, and jewellery which could get caught in moving parts. Non-slip footwear is recommended. Wear protective hair covering to contain long hair.
13. Always use safety glasses. Normal spectacles only have impact resistant lenses. They are not safety glasses.
14. Do not over-reach. Keep proper footing and balance at all times.
15. Maintain the machine in good condition. Keep the machine clean for best and safest performance. Follow instructions for lubrication and changing accessories.
16. Disconnect the machine from power source before servicing and when changing the blade.
17. Never leave the machine running unattended. Turn the power off. Do not leave the machine until it comes to a complete stop.
18. Do not use any power tools while under the effects of drugs, alcohol or medication.
19. Always wear a face or dust mask if operation creates a lot of dust and/or chips. Always operate the tool in a well ventilated area and provide for proper dust removal. Use a suitable dust extractor.



Risk of Injury.
Never reach into
a moving part



Wear Eye
Protection

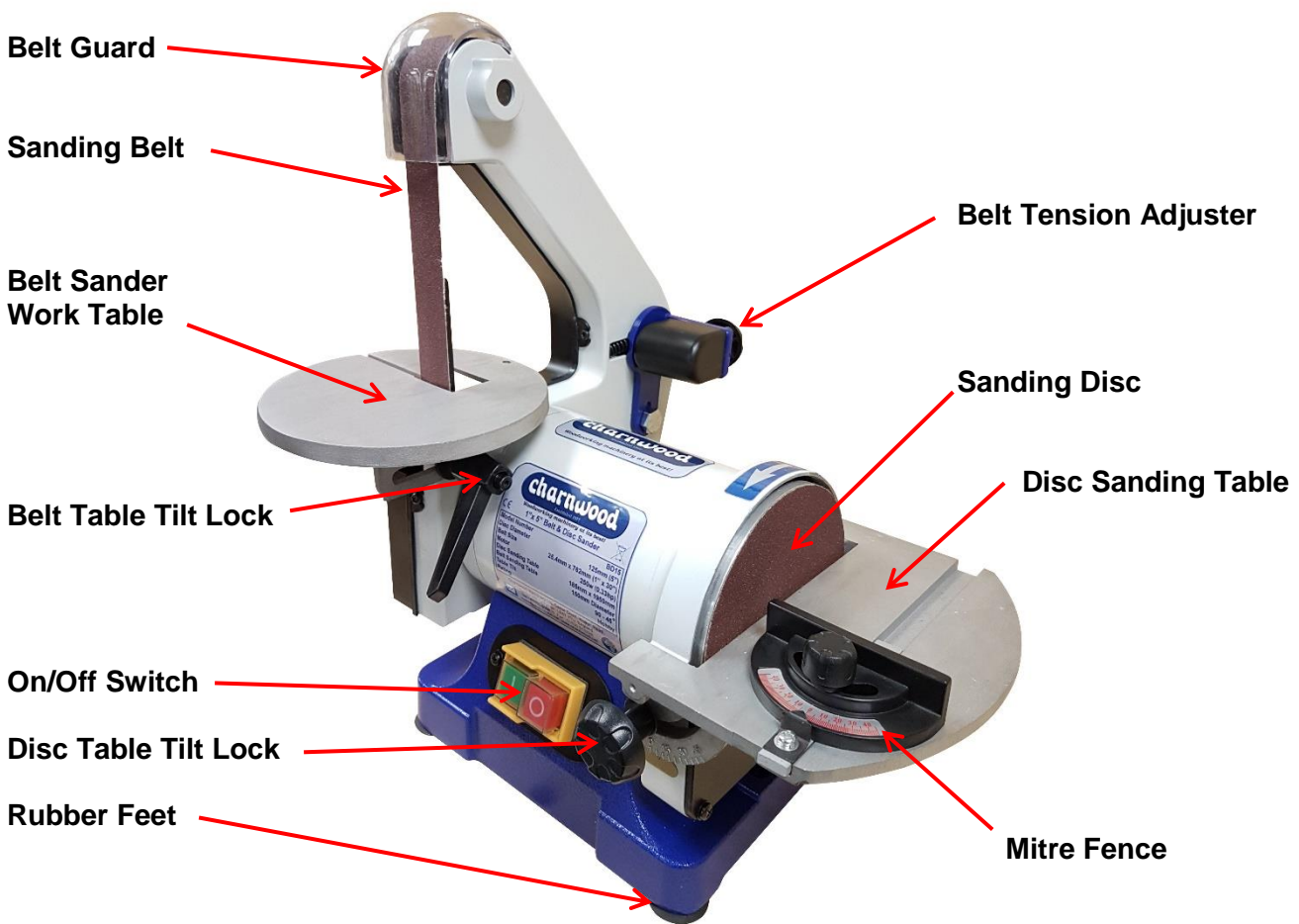


Wear a Dust Mask



Wear Ear Protection

Overview of BD15 Belt & Disc Sander



BD15 Specification

Disc Diameter	125mm (5")
Belt Size	25mm x 762mm (1" x 30")
Motor (Induction) 240v, 50hz	250w (0.33hp)
Motor No-Load Speed	2850rpm
Disc Sanding Table	185mm x 95mm
Belt Sanding Table	150mm Diameter
Table Tilt	90 – 45 degrees
Acoustic power level	91.1db (A)
Acoustic pressure level	79.9db (A)
Weight	7.5kg
Manufacturer's Warranty	1 year
Rating	Hobby

Rating Description

Hobby: Suitable for Weekend DIY'ers and woodworking enthusiasts.

Generally lighter weight machines with lower power ratings and smaller tooling capacities. Typically only ever used by one person for short periods of time or longer periods of time infrequently. Machinery should be well maintained in a clean, dry environment such as a home workshop, garage or timber shed.

Expected maximum use of 100 hours annually.

Please Note: Using a product in excess of its rating will void the manufacturer's free warranty.

Unpacking



All items are packed in one cardboard carton.



Carefully unpack and check that all items are included as in the photograph.

Assembly



Attach the dust guard using the three phillips head screws and small washers.



Fit the disc table by tilting at the angle shown and slide into place.

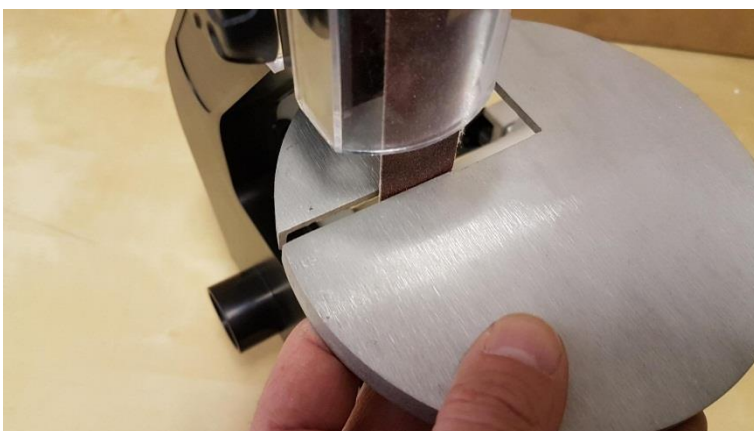
Then lift up in the slots.



Lock the table in place using the two locking knobs and washers.



Using a set square ensure that the table is set at 90 degrees to the sanding disc.



Fit the sanding belt table by passing the belt through the slot in the table.

Then drop it down into position.



Lock the table into position using the locking handle and washer.

Tip: Hold the nut insert on the left in place to stop it falling out then use the ratchet on the locking handle to tighten.



Using a set square ensure that the table is set at 90 degrees to the sanding belt.

Setting Up



Tracking the Belt

Ensure the machine is disconnected from the power supply.

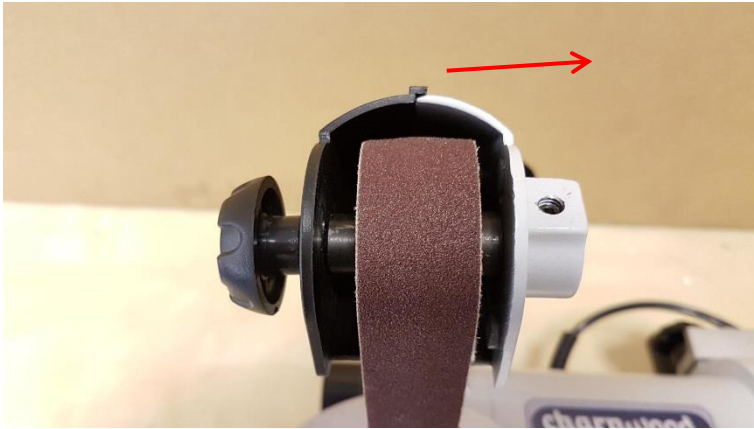
Loosen the knob and remove the belt guard.



Slowly rotate the belt by hand by turning the sanding disc, ensuring that it is travelling in the direction of the arrow.

Note: if the belt is tending to slide off the roller and to which side.

If the belt doesn't slide sideways then it is already tracked correctly.



Looking from the front:

If the belt moves sideways towards the disc then turn the tracking knob anti-clockwise.

(A quarter turn is normally enough)

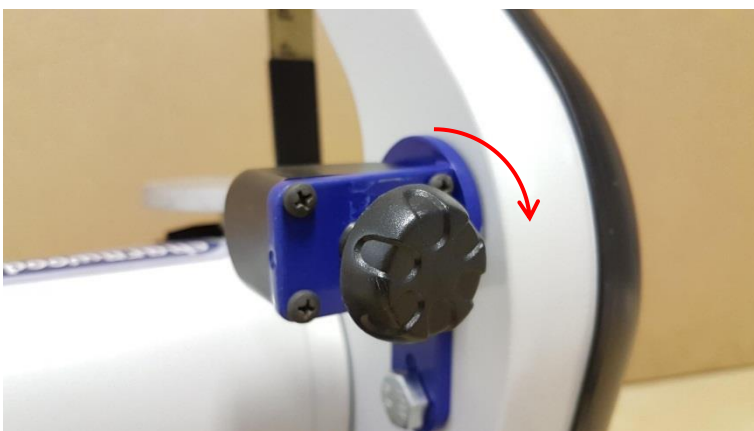
Continue adjustments until the belt remains central on the roller.



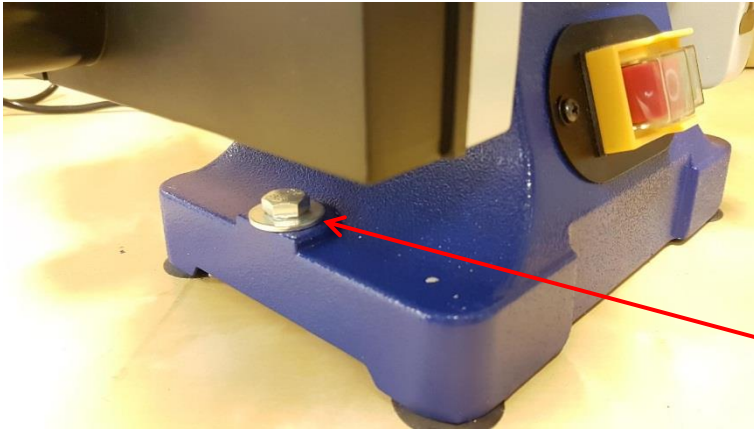
If the belt moves sideways away from the disc then turn the tracking knob clockwise.

(A quarter turn is normally enough)

Continue adjustments until the belt remains central on the roller.



Using The Sander



This sander is designed for use with wood and wood-based products only. It should not be used for sanding metal and any such use will invalidate the warranty. Dust extraction must be used at all times.

Before use make sure your sander is bolted down securely using the two bolt holes.



The work table must always be used as a support when carrying out straight edge or face sanding.

Move the workpiece across the belt while keeping one edge against the work table.

Do not use excessive pressure and take extra care when sanding thin material.



To sand at an angle adjust the table using the locking handle to the required angle.



The top of the belt can be used for internal curved sanding.

Loosen the locking knob and remove the belt guard.



Move the workpiece backwards and forwards over the curved end of the belt.

Never present the end of a workpiece to the curved edge as this can cause it to kick back.

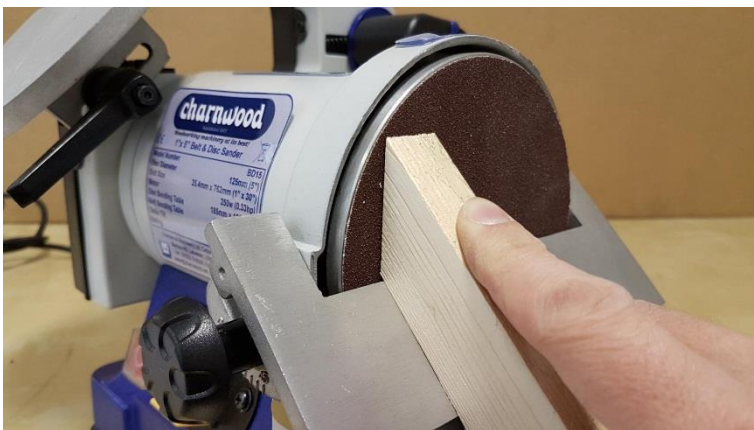


The disc sander is ideally suited to smoothing end grain and fine-tuning angled cuts with the aid of the mitre guide.

Whenever possible use the left half of the exposed disc as this will hold the workpiece against the table.

If it is necessary to use the full width of the disc, care must be taken to hold the workpiece firmly as the right half will tend to cause it to lift.

Keep the workpiece moving to achieve the best finish.



To use the table on an angle, loosen the two locking knobs and move to the required angle.

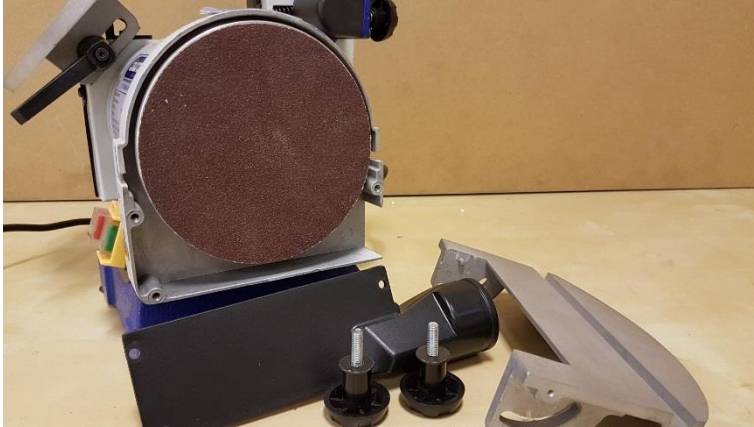
Always check the angle before sanding.



The mitre guide supplied can be used for fine sanding on angles up to 45 degrees.

By combining the table tilt and mitre guide, compound angles can be sanded.

Maintenance



Replacing the Sanding Disc

Always ensure the machine is disconnected from the power supply before any maintenance.

Remove the two work table locking knobs and slide out the work table.

Remove the dust extraction guard by taking out the three screws.

Carefully remove the existing self-adhesive sanding disc with the aid of a flat blade scraper.

Remove any residue from the sanding disc plate using mineral / methylated spirit.

Peel the backing from the new sanding disc and apply to the sanding plate. Ensure that it is positioned centrally on the plate, then firmly press into place.

Re-fit the dust guard, tightening all the screws and re-attach the work table.



We recommend replacing the self adhesive disc with our VB150 Velcro conversion kit.

This will allow hook & loop backed discs to be used.

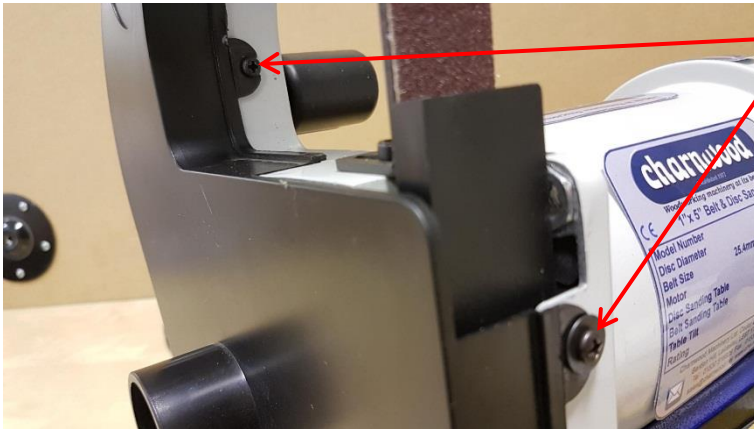
The great advantage being the ability to swap the disc over in seconds allowing different grit sizes to be used.

Unlike self adhesive discs, hook & loop discs can be refitted at any time.



Replacing the Belt

Remove the locking knob and belt guard.



Take off the side cover by removing the two screws.



Take the tension off the belt.

Press and hold the tension wheel in, then slide the belt off the side.



Slide the belt off through the slot in the table.

Replace with a new belt by reversing the above instructions.

Replace all covers and guards and then track the belt as in previous instructions.

Troubleshooting

Problem	Cause	Remedy
Machine does not start	Blown Fuse	Replace Fuse
	Loose switch terminal	Inspect back of switch
	Faulty Motor	Replace motor
	Faulty switch	Replace switch
Only starts when Green button is held down	Faulty switch	Replace switch
Machine slows down when sanding	Operator applying too much pressure to the work piece	Use less pressure when applying the work piece to the sanding surface
Sanding belt runs off the wheels	Not tracked correctly	Adjust sanding belt tracking
Wood burns while sanding	Sanding surface clogged	Clean or replace disc or belt
	Excessive pressure being applies to work piece	Use less pressure when applying work piece to sanding surface
Motor Overheats	Motor overloaded	Allow to cool, restart with reduced load



Please dispose of packaging for the product in a responsible manner. It is suitable for recycling. Help to protect the environment, take the packaging to the local amenity tip and place into the appropriate recycling bin.



Only for EU countries

Do not dispose of electric tools together with household waste material!

In observance of European Directive 2002/96/EC on waste electrical and electronic equipment (EEE) and its implementation in accordance with national law, electric tools that have reached the end of their life must be collected separately and returned to an environmentally compatible recycling facility.



Your local refuse amenity will have a separate collection area for EEE goods


Declaration of Conformity for CE Marking

Charnwood Declare that Belt & Disc Sander, Model BD15

Conforms with the following Directives: Machinery Directive 2006/42/EC
EMC Directive 2014/30/EU

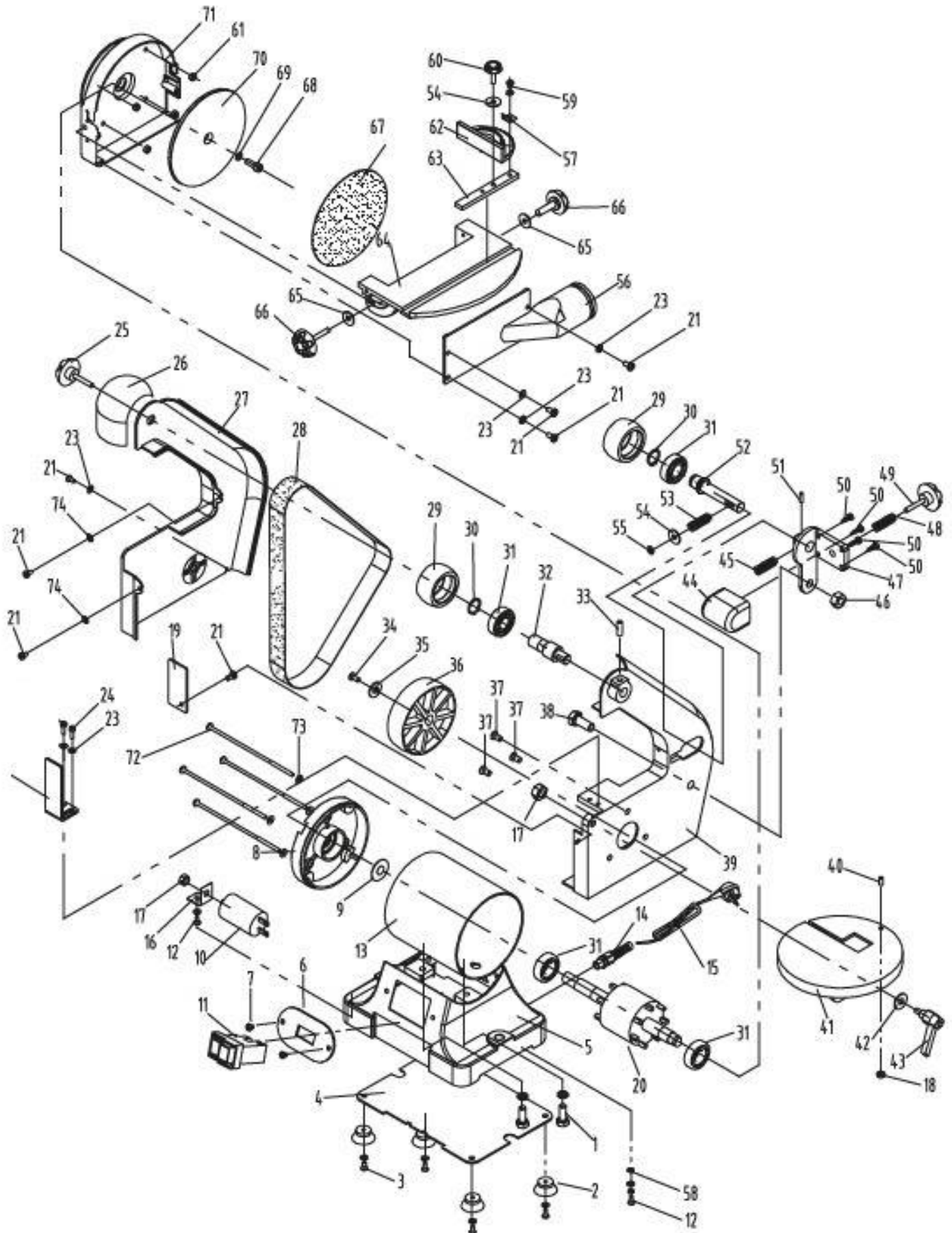
And further conforms to the machinery example for which the EC type examination Certificate No. AM50401624 & AE50392019 have been issued by TUV Rheinland LGA Products GmbH, Tillystrasse 2, 90431 Nurnberg, Germany.

I hereby declare that equipment named above has been tested and found to comply with the relevant sections of the above referenced specifications. The machinery complies with all essential requirements of the directive.

Signed:  Dated: 28/04/2018 Location: Leicestershire

Richard Cook, Director

Charnwood BD15 Parts Drawing



Charnwood DB15 Parts List

Part No.	Description	Part No.	Description
01	Screw	02	Foot
03	Screw	04	Base Cover
05	Main Body	06	Switch Plate
07	Screw	08	Motor End Plate
09	Washer	10	Capacitor 8uf 450Vac, 50mm x 40mm dia, M8 mount with spades
11	Switch KJD20-2	12	Screw
13	Motor body	14	Cable Grommet
15	Power Cable	16	Capacitor Bracket
17	Nut	18	Nut
19	Cover	20	Armature
21	Screw	22	Belt Sanding Plate
23	Washer	24	Screw
25	Knob	26	Belt Guard
27	Belt Cover	28	Sanding Belt
29	Upper Belt Wheel	30	Circlip
31	Bearing	32	Top shaft
33	Screw	34	Screw
35	Washer	36	Lower Belt Wheel
37	Screw	38	Knob
39	Belt Housing	40	Grub Screw
41	Belt Sanding Table	42	Washer
43	Locking Handle	44	Tension Housing
45	Spring	46	Nut
47	Tension Bracket	48	Spring
49	Knob	50	Screw
51	Screw	52	Tension shaft
53	Spring	54	Washer
55	Washer	56	Dust Outlet
57	Pointer	58	Washer
59	Screw	60	Knob
61	Nut	62	Mitre Guide Quadrant
63	Mitre Guide Runner	64	Sanding Disc Table
65	Washer	66	Knob
67	Sanding Disc	68	Screw
69	Washer	70	Disc Plate
71	Disc Housing	72	Long Screw
73	Washer	74	Washer



Woodworking machinery at its best!

Updated April 2019

**Charnwood Machinery Ltd, Cedar Court, Walker Road,
Hilltop Industrial Estate, Bardon Hill, Leicestershire, LE67 1TU, England**

**Tel. 01530 516 926 Fax. 01530 516 929
email: sales@charnwood.net website: www.charnwood.net**